



20 Ton Dual Action Log Splitter



Instruction & Assembly

Jansen GmbH & Co.KG, Ostersed 19, 49824 Emlichheim, Germany
tel.: 0049-5943-1881, fax: 0049-5943-1421, email: info@jansen-versand.com

SAVE THESE INSTRUCTIONS FOR FUTURE REFERENCE



CHECK BEFORE COMMISSIONING



Our machines are pre-assembled!

Final assembly (unless indicated otherwise) must be carried out by you!
Please note the information below!*

Please check the machine for damage immediately after unpacking!



FILL ENGINE WITH ENGINE OIL (unless indicated otherwise!)

- The engine is dry on delivery and must be filled with engine oil!
- Use engine oil type 10W40 or 15W40
- Requires approx. 1 to 1.5 litres (depending on engine type). Please use the included dipstick for the correct amount of engine oil or follow the instructions in the manual
- Unless indicated otherwise, please fill with Super petrol (Euro 95, no E10)



FILL GEARBOX WITH GEARBOX OIL (unless indicated otherwise!)

- The gearbox is dry on delivery and must be filled with gear oil!
- Use gear oil type **80W90 or 85W90**
- Please refer to the enclosed operating instructions for the necessary quantities



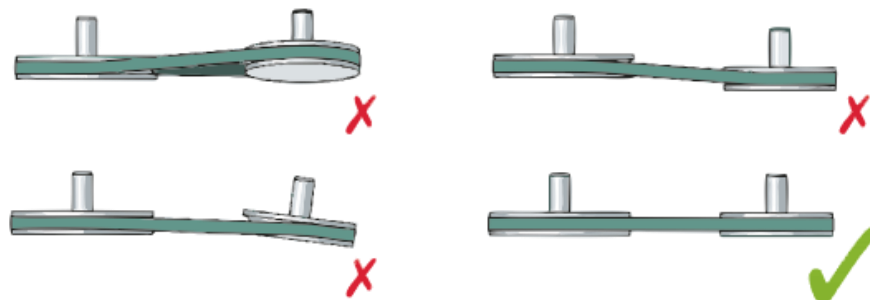
RERTIGHTENING SCREWS AND NUTS

- Check all screws and nuts are tight and retighten prior to commissioning!
This also applies to pre-assembled parts
- After the first 2 hours of operation, please check the tightness of the bolts and nuts again. Repeat these steps routinely.



CHECK AND ALIGN BELT PULLEYS

- One of the most common causes of unplanned downtimes in belt-driven machines is misalignment of the belt pulleys. Misaligned pulleys cause increased wear, noise, vibration and ultimately machine downtime.
- The pulleys are aligned using a straight edge or cord
- When correctly aligned, the grooves of the pulleys are in alignment (see figure).



CHARGE BATTERIES

- Please check the battery charge and if necessary charge fully

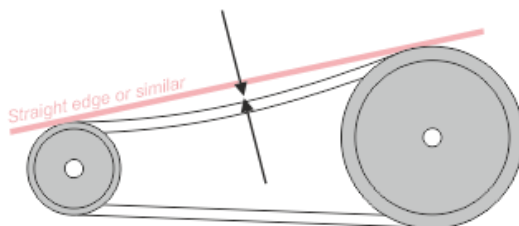


CHECK BEFORE COMMISSIONING



CHECK BELT TENSION

- A drive belt must be properly tensioned to prevent premature damage and ensure maximum service life. Regular inspection and maintenance successfully prevent engine, transmission and belt damage.



At 1.5 kg pressure, the belt may deflect by approx. 10 mm



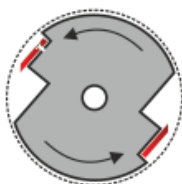
LUBRICATE / GREASE BEARINGS

- Please check the installed bearings regularly for sufficient lubrication!
- Most machines are fitted with bearings with grease nipples (see figure)
- You will need a standard grease gun and a mineral oil-based multi-purpose machine grease

Lubricating nipple / grease nipple



Ex. Grease gun



ALIGN ROTOR KNIVES

- Check the distance between rotor knife and counter blade and adjust if necessary! Please observe the notes in the operating instructions.
- Manually turn to check the distance between the rotor knife and the counter blade and both blades of the rotor is maintained.
- Check all screw connections of rotor knives and counter blade
- Attention: The screws of the knives are also thread locked. When loosening the screws (e.g. to change the knives), you must first heat them up (approx. 150°C) or they will break off! When retightening the screws, please also use a small amount of thread lock (e.g. Loctite 243, medium strength)



***The above steps are for safety reasons and must be observed!**

Some points may not apply to your machine. Nevertheless, it is important to properly observe and check all applicable and necessary steps for your machine!

Read and understand the operating instructions included in the delivery!

Table of Contents

General Warnings and Rules	3
Controls and Features Identification.....	5
Component Parts	6, 7
Assembly Instructions	8, 9, 10, 11, 12
Operation Instructions	13, 14, 15, 16
Maintenance	17
Storage	18
Troubleshooting	19
Specification.....	20
Parts Drawing & Parts List	21, 22, 23, 24



GENERAL WARNINGS



READ and UNDERSTAND this manual completely before using 20 Ton Log Splitter.

Operator must read and understand all safety and warning information, operating instructions, maintenance and storage instructions before operating this equipment. Failure to properly operate and maintain the log splitter could result in serious injury to the operator or bystanders.

Operation Warnings

- Do not at any time carry passengers, sit or stand on the log splitter.
- Do not allow children to play on, stand upon or climb on the log splitter.
- Always inspect the log splitter before using to assure it is in good working condition.
- Replace or repair damaged or worn parts immediately.
- Always check and tighten hardware and assembled parts before operation.
- Do not exceed equipment maximum load capacity of 20 tons.
- Avoid large holes and ditches when towing the equipment.
- Always operate the log splitter on clear and level ground.
- Do not operate the log splitter at night, only during daylight hours.
- Always tow at reduce speed in rough terrain, along creeks, ditches and on hillsides.
- To avoid personal injury and/or equipment damage **DO NOT EXCEED 45 MPH**.
- Driving under 30 MPH on public roads, it is recommended using a "Slow Moving Vehicle" (SMV) emblem or a "Speed Identification Symbol" (SIS). Signs are available at farm equipment dealers.
- Always refer to the vehicle owner's manual for proper towing.
- Only tow with recommended vehicles.
- Always secure and lock the log splitter to the vehicle hitch before towing.

Crush and Cut Hazards

- Always keep hands and feet clear from moving parts while operating the equipment.
- Always clear and keep work area clean and free of debris when operating.
- Always wear safety gear, ear and eye protection, gloves and work boots when operating the log splitter.

High Pressure Hydraulic Fluid Hazards

High fluid pressures and temperatures are developed in hydraulic log splitters. Hydraulic fluid escaping through a pin-size hold opening can puncture skin and cause severe blood poisoning. Inspect hydraulic system regularly for possible leaks. **NEVER use your hand to check for leaks while the system is pressurized. Seek medical attention immediately if injured by escaping fluid.**



WARNING

The warnings, cautions, and instructions outlined in this instruction manual cannot cover all possible conditions or situations that may occur. It must be understood by the operator that common sense and caution are factors which cannot be built into this product and must be supplied by the operator.

Assembly Is Required

This product requires assembly before use. See "Assembly" section for instructions. Because of the weight and/or size of the log splitter, it is recommended that another adult be present to assist with the assembly. **INSPECT ALL COMPONENTS** closely upon receipt to make sure no components are missing or damaged.

Hazard Signal Word Definitions

	<p>This is the safety alert symbol. It is used to alert you to potential personal injury hazards. Obey all safety messages that follow this symbol to avoid possible injury or death.</p>
	<p>DANGER indicates an imminently hazardous situation which, if not avoided, will result in death or serious injury.</p>
	<p>WARNING indicates a potentially hazardous situation which, if not avoided, could result in death or serious injury.</p>
	<p>CAUTION indicates a potentially hazardous situation which, if not avoided, may result in minor or moderate injury.</p>
	<p>CAUTION used without the safety alert symbol indicates a potentially hazardous situation which, if not avoided, may result in property damage.</p>

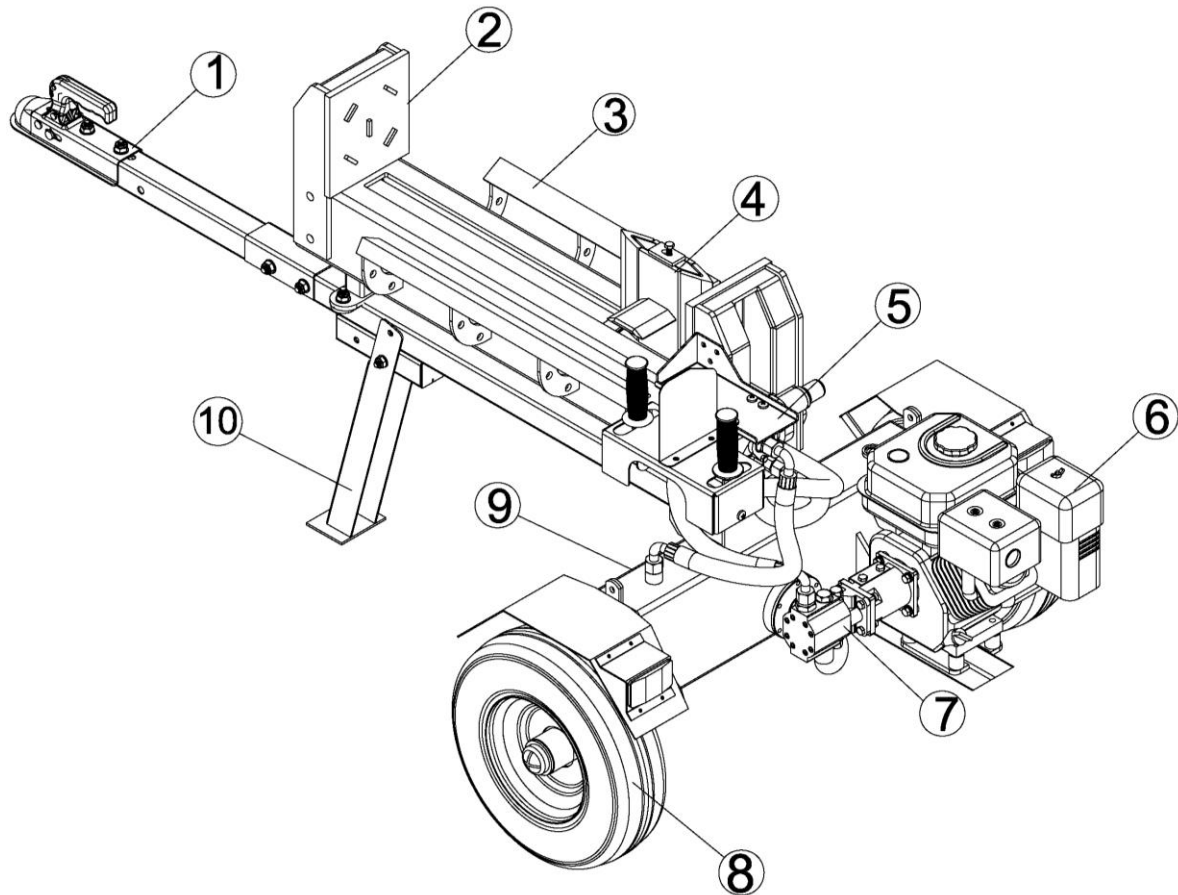
ABOUT YOUR 20 TON DUAL ACTION LOG SPLITTER

This dual action log splitter has a heavy-duty steel construction and 20 tons of ram force. When there's work to be done, you need outdoor power equipment you can rely on. This unit tackles the tough jobs in half of the time, with its innovative dual action time saving design. It splits logs in both directions when the wedge is extended and retracted allowing you to split twice as fast as traditional log splitters. This unit includes the optional cross wedges that maybe attached to the main wedge allowing you to split a log into four pieces in just one pass increasing your productivity. It is easy to tow, easy to use and maintain. Never exceed the rated capacity of 20 tons when operating the log splitter.

Technical specifications on the log splitter are provided in the "Specifications" section of this manual.

Controls and Features Identification

Read this owner's manual before operating the equipment. Familiarize yourself with the location and function of the controls and features. Save this manual for future reference.



- 1) **50mm Coupler** – Attaches the log splitter to the tow vehicle.
- 2) **Beam/Cylinder** - Hydraulic cylinder has a 4" bore and 23" stroke.
- 3) **Log Cradle** – Keeps the log from falling off the beam or onto the ground after splitting.
- 4) **Wedge** – Splits logs in both directions and in 2 pieces in one pass.
- 5) **Control Lever** – Moves the splitting wedge forward and backward.
- 6) **Gasoline Engine** – 6.5HP
- 7) **Hydraulic 2-Stage Gear Pump** – Pumps hydraulic oil through the system.
- 8) **Wheels/Tires** – Never exceed 45 MPH.
- 9) **Hydraulic Tank Size** – Stores hydraulic oil approximately 2.5 Gallons (9.5L).
- 10) **Support Leg** - Supports the log splitter during operation. Raise leg when towing or moving.



CAUTION

Read and follow all instructions for assembly and operation. Failure to properly assemble this equipment could result in serious injury to the user or bystanders, or cause equipment damage.



Engine Shipped Without Oil.

Before starting engine, fill with SAE 10W-30 motor oil.
See engine manual for engine oil capacity.

Hydraulic Oil Tank is Shipped Without Oil.

When adding oil verify the oil level reads 1 from the top of hydraulic oil tank if marking is not shown fill to the neck.

Inspect all Log Splitter Components.

If you have damaged components: Contact the freight company that delivered the log splitter and file a claim.

20 TON DUAL ACTION LOG SPLITTER ASSEMBLY

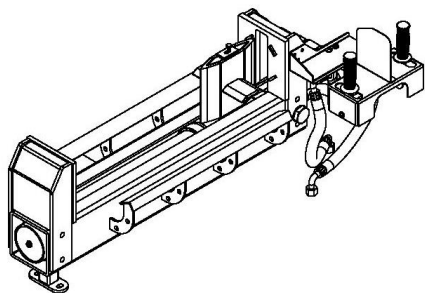
Set the shipping crate on a solid flat surface and carefully remove the lid. Use two people and take all parts out of the shipping crate and inspect the components to ensure there are no missing pieces before starting to assemble the log splitter follow steps 1 through 6.

TOOLS REQUIRED

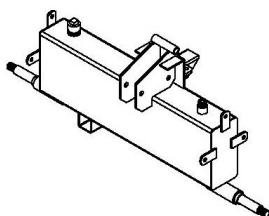
- Rubber or Wooden Hammer
- 1/2", 9/16", 3/4" and 5/16" Wrenches
- Large Adjustable Wrench
- Phillips Screw Driver
- Pliers

Component Parts

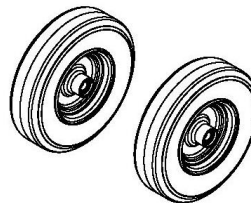
Beam Assembly
1 pc



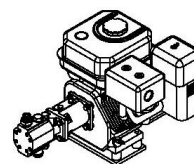
Oil Tank Assembly
1 pc



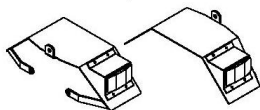
Wheel Assembly
2 pcs



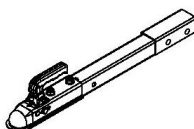
Engine
1 pc



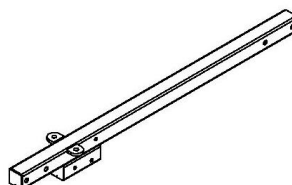
Left & Right Fender
2 pcs



Tow Bar I
1 pc



Tow Bar II
1 pc



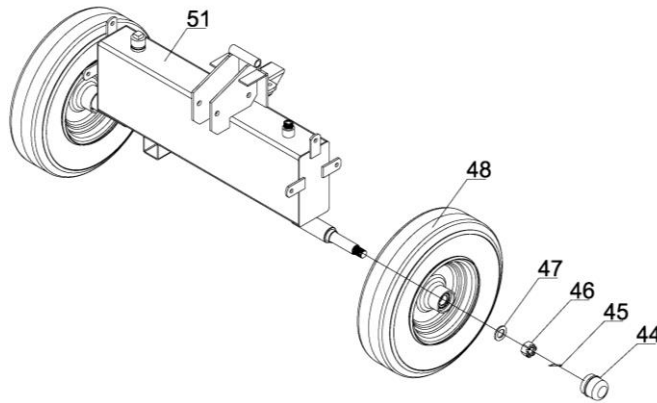
Support Leg
1 pc



Assembly Instructions

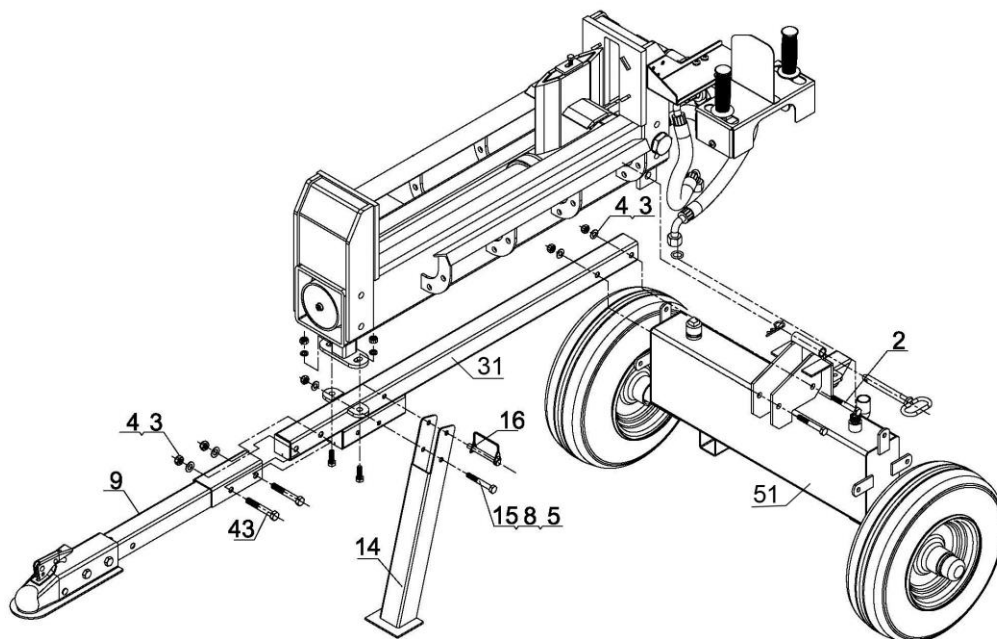
STEP 1: Wheel Assembly

1. Attach both wheels (#48) to the oil tank (#51) using flat washer Ø20 (#47), slotted nut M12 (#46), cotter pin Ø4x36 (#45), then cover the axle cap (#44). Fill axle cap with grease.



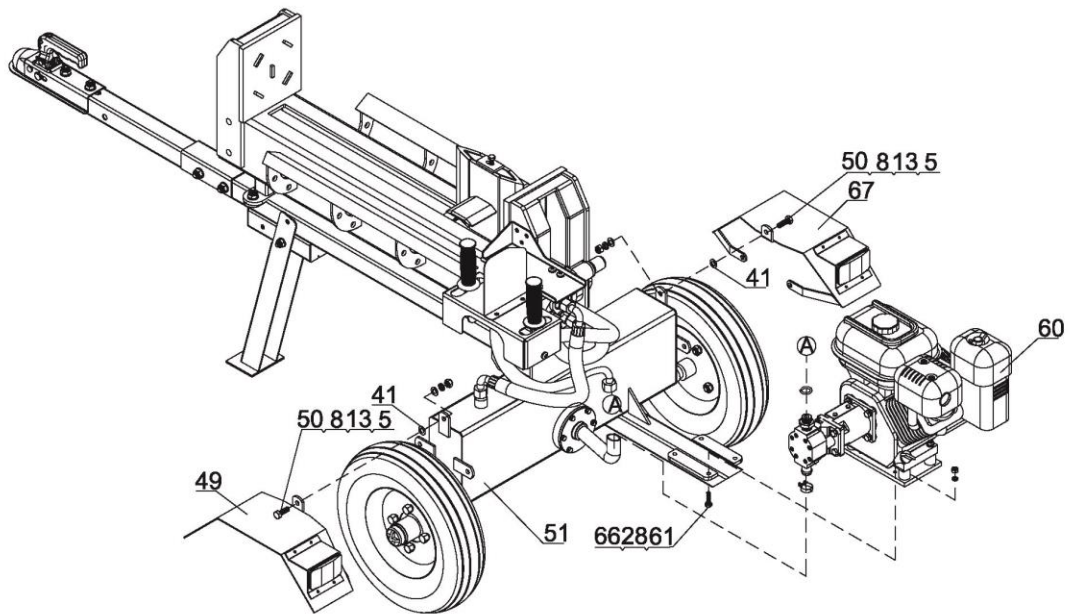
STEP 2: Attach Main Frame to Oil Tank

1. Assemble the tow bar (#31) and support leg (#14) together using hex bolt M10x75 (#15), flat washer Ø10 (#8) and nylon lock nut M10 (#5).
2. Insert the lock pin (#16) into the tow bar (#31) and support leg (#14).
3. Attach the tow bar (#31) to the oil tank (#51) using 2 hex bolts M12x80 (#2), 2 flat washers Ø12 (#3) and nylon lock nuts M12 (#4).
4. Attach the front tow bar (#9) to the tow bar (#31) using 2 hex bolts M12x75 (#43), flat washers Ø12 (#3) and nylon lock nuts M12 (#4) to the rear tow bar (#31).



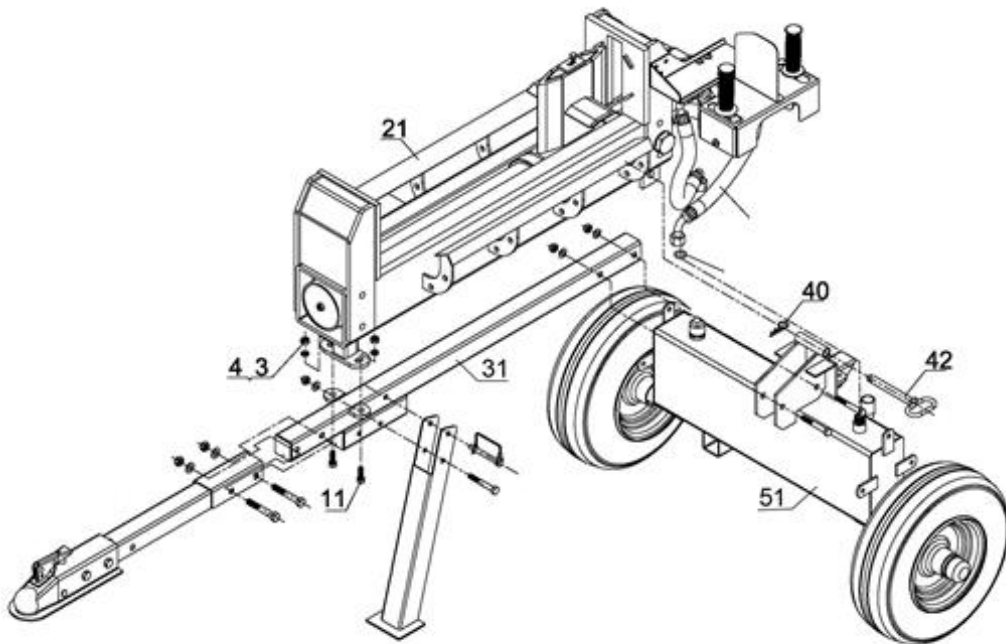
STEP 3: Attach Engine and Fenders

1. Attach the engine (#60) to the oil tank (#51) using 4 hex bolts M8x30 (#66), 4 lock washers Ø8 (#28) and nylon lock nuts M8 (#61).
2. Attach both fenders (#49 & #67) to the oil tank (#51) using hex bolt M10x30 (#50), rubber washer (#41), Ø10 flat washer (#8) lock washer Ø10 (#13), and nylon hex lock nut M10 (#5).



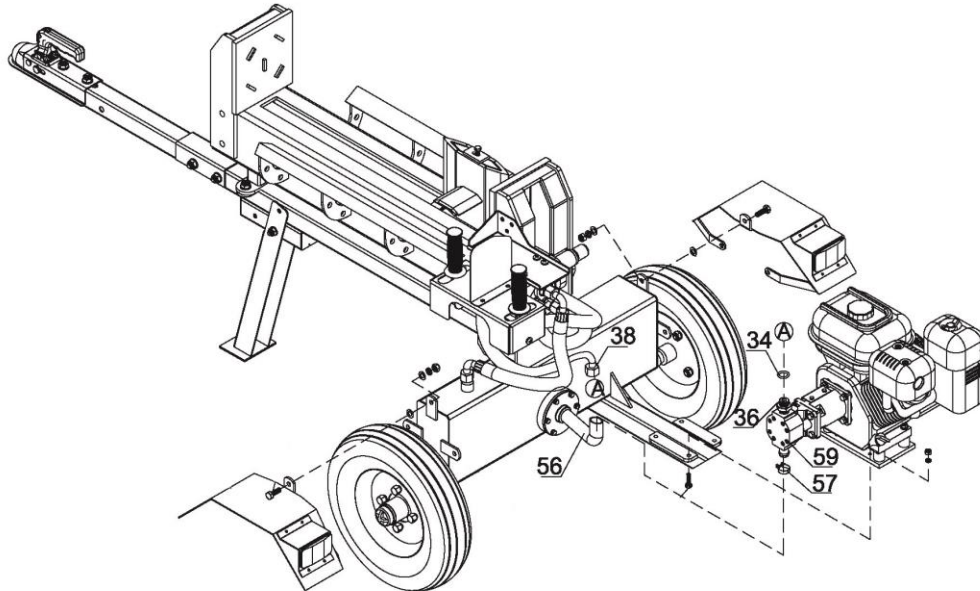
STEP 4: Attach beam assembly to oil tank

1. Connect the beam assembly (#21) to the oil tank (#51) using hinge pin (#42) and R Pin (#40).
2. Connect the tow bar (#31) to the beam assembly (#21) using hex bolt M12x35 (#11), flat washer Ø12 (#3) and nylon lock nut M12 (#4).

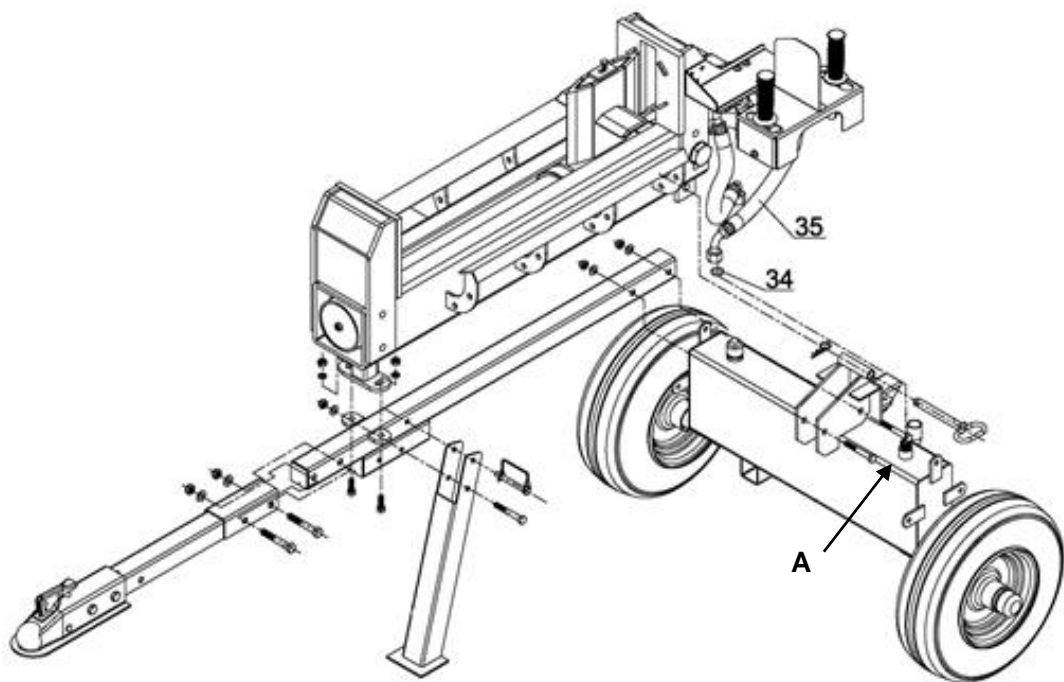


STEP 5: Connect hydraulic hoses and oil pipe

1. Attach the oil pipe (#56) and clamp (#57) to the gear pump (#59). Tighten the clamp (#57).
2. Also check the clamp at the oil tank on the other side of the oil pipe.
3. Attach the hydraulic hose (valve-gear pump) (#38) and O ring Ø16x2.4 (#34) to the connector NPT1/2"-7/8" (#36).



4. Put the O ring Ø16x2.4 (#34) onto the slot of oil tank connector (A), then connect the hydraulic hose (#35) with oil tank connector (A).



STEP 6: Add Engine Oil

1. Make sure the log splitter is on a level surface.
2. Remove oil fill cap/dipstick to add oil.
3. Refer to the separate owner's engine manual for the amount needed of SAE10W-30 engine oil; replace oil fill cap/dipstick.
4. Check engine oil level daily and add as needed.

NOTE: During the break-in period check the engine oil level often.



CAUTION

DO NOT attempt to crank or start the engine before it has been properly filled with the recommended type and amount of oil. Damage to the log splitter as a result of failure to follow these instructions will void your warranty.

STEP 7: Add Gasoline to the Engine

1. Use only clean, fresh, regular unleaded fuel with a minimum 86 octane rating.
2. DO NOT mix oil with fuel.
3. Remove the fuel cap and slowly add fuel to the tank. DO NOT overfill allow approximately ¼ inch of space for fuel expansion.
4. Screw on the fuel cap and wipe away any spilled fuel.



DANGER

Log splitter engine exhaust contains carbon monoxide, a colorless, odorless, poison gas. Breathing carbon monoxide will cause nausea, dizziness, fainting or death. If you start to feel dizzy or weak, get to fresh air immediately.

Operate log splitter outdoors only in a well ventilated area.

DO NOT operate the log splitter inside any building, enclosure or compartment.

DO NOT allow exhaust fumes to enter a confined area through windows, doors, vents or other openings.

DANGER CARBON MONOXIDE, using a log splitter indoors **CAN KILL YOU IN MINUTES.**



CAUTION

Fuel and fuel vapors are highly flammable and extremely explosive.

Fire or explosion can cause severe burns or death.

Unintentional startup can result in entanglement, traumatic amputation or laceration.

Only use regular unleaded gasoline with a minimum 85 octane rating.

Always stay away from sources of heat, flame, or sparks while adding fuel.

DO NOT mix oil and gasoline together.

Fill tank approximately ¼" below the top of the tank to allow for fuel expansion.

DO NOT fill fuel tank indoors or when the engine is running or hot.

DO NOT light cigarettes or smoke when filling the fuel tank.

STEP 8: Add Hydraulic Oil

1. The log splitter needs to be on a flat, level surface before adding the hydraulic oil.
2. Remove the oil cap from the hydraulic oil tank.
3. Add approximately 2.5 gallons (9.5L) of hydraulic oil 10W AW32, ASLE H-150, ISO 32 are all acceptable types of fluid.
4. Check the hydraulic oil level.
5. Start engine and use the control lever to extend and retract wedge several times to remove air from the lines.
6. With the wedge retracted, check hydraulic oil level again and fill if necessary.

Note: For extended use with outdoor temperatures above 70°F it is recommend DEXTRON III.

WARNING

DO NOT remove the hydraulic oil fill cap when the engine is running or hot. Hot oil can escape causing severe burns. Always allow the log splitter to cool completely before removing the hydraulic oil cap.

Always stop the engine, disconnect the spark plug, and move the split control lever back and forth to relieve pressure before changing or adjusting hydraulic system components; hoses, fittings or other components.

High fluid pressure and temperatures are created in the hydraulic log splitters. Hydraulic fluid will escape through a pin-size hole opening and can puncture skin and cause severe blood poisoning. Inspect hydraulic system regularly for possible leaks. **Never check for leaks with your hand while the system is pressurized. Seek medical attention immediately if injured by escaping fluid.**

Always see a doctor immediately If injured by escaping fluid, no matter how small. An injection injury may be a small puncture wound that does not look serious but severe infection or reaction can result if proper medical treatment is not administered immediately by a doctor who is familiar with injection injuries.

Never adjust the pressure setting of the pump or valve. Make sure all fittings are tight and secure before applying pressure. Relieve system pressure before servicing.

Make sure the hydraulic hoses do not touch any hot surfaces or cutting areas. Hoses need to be positioned were they are clear from the engine and cutting wedge. To avoid serious bodily injury always inspect the hoses before operating the log splitter.

Operation Instructions

WARNING

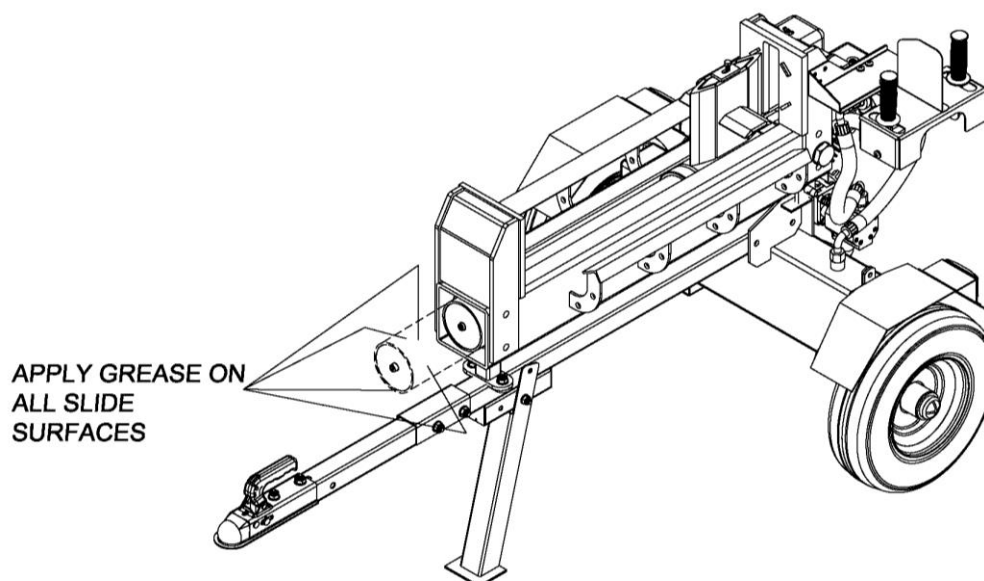
Before operating or using the log splitter, review the instructions below and all safety information. Failure to follow these instructions may result in property damage or injury to the operator or bystanders.

WARNING

ALWAYS use the log splitter for its intended use.
ONLY use the log splitter to split wood logs, length wise with the grain.
NEVER modify, alter or change the log splitter in anyway, modifications will void the warranty.
NEVER attach a rope, cable or other device to the control lever on the log splitter.
ONLY operate the log splitter in daylight.
NEVER leave the log splitter unattended while the engine is running.
ENSURE the log splitter engine is off. Never move the log splitter with its engine running.
ALWAYS TURN THE FUEL VALVE TO THE OFF POSITION to prevent carburetor flooding and reduce the chance of fuel leakage.
ALWAYS RAISE THE SUPPORT LEG UP before moving or towing the log splitter.
DO NOT move the log splitter up or down hills by hand – use a towing vehicle.
ONLY use approved vehicles for towing.
DO NOT exceeds the maximum towing speed of 25 KMPH.
NEVER operate log splitter while it is attached to the vehicle.
NEVER operate or let anyone else operate, the log splitter while under the influence of alcohol, drugs, or medication.

USING YOUR LOG SPLITTER

1. DO NOT at any time carry passengers, sit or stand on the log splitter.
2. Check the hydraulic oil level and visually inspect all hoses and attachments for problems.
3. Inspect the engine and make sure the engine oil level is correct and there is a full tank of fuel.
4. Extend the wedge slide, lubricate the surface with grease. This helps prevent wear between the wedge slide and beam.



5. Before towing the log splitter the tires need to be fully inflated.

TIRE WARNING

DO NOT over inflate tires. Serious injury can result if tires explode.
DO NOT tow the log splitter if the tires are worn or will not hold air.
DO NOT exceed the maximum 45 MPH towing speed.

6. Refer to the vehicle owner's manual for proper safety and towing instructions.

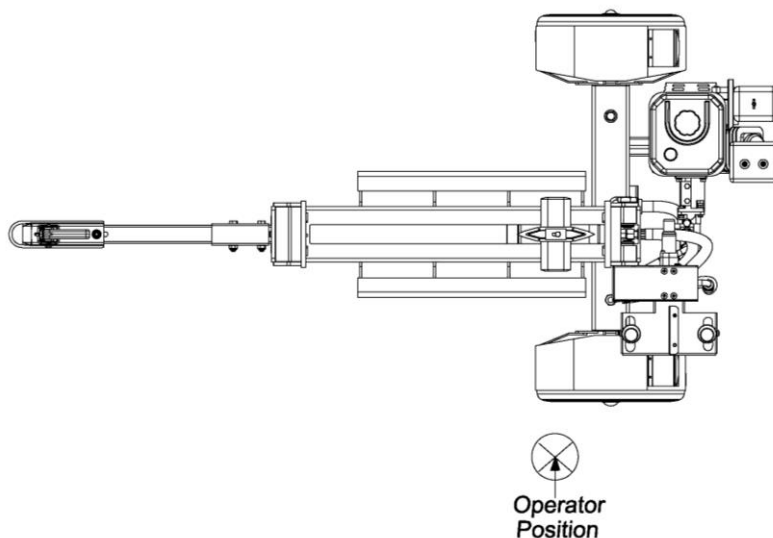
TOWING WARNING

Serious injury or death can occur if towing safety rules are not followed.
Always use safety chains, secure and lock the log splitter to the vehicle hitch before moving.
ALWAYS RAISE THE SUPPORT LEG UP before moving or towing the log splitter.
Drive safely. Be aware of the added length of the log splitter.
Never exceed the maximum travel speed of 25 kmph.
Never ride or transport cargo on the log splitter.
Turn off the vehicle before leaving the log splitter unattended.
Block the log splitter wheels to prevent unintended movement.

7. The log splitter must have at least seven feet of clearance from combustible material. It needs to be on a dry and level surface with good footing. Do not work on mud, ice, brush or snow. When using the log splitter the work zone must be maintained at all times.

WARNING

It is important to select an appropriate work site and properly set up the log splitter in order to minimize the risk of slips and falls, equipment rolling or tipping over, carbon monoxide poisoning, and accidental fires.



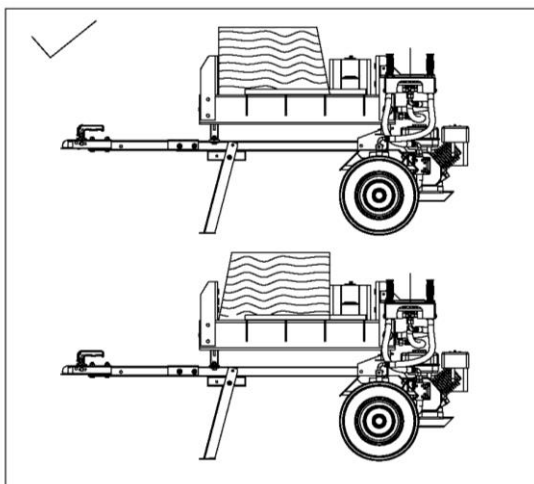
NOTE: Serious accidents can happen when other people are allowed inside the work area. Keep everyone else outside the work area while operating the control lever.

8. Always wear safety gear, ear and eye protection, gloves and work boots when operating the log splitter.
9. Start the engine and make sure the log splitter is on level ground before operating.

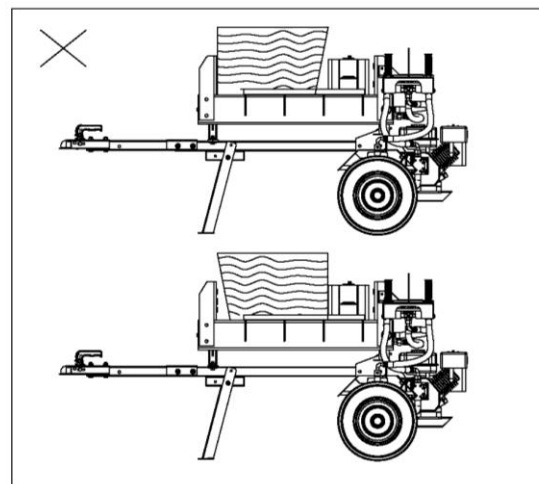
NOTE: The hydraulic oil needs to be above 10°F (-12C°) before starting the engine. Cold hydraulic oil can damage the hydraulic pump. If outdoor air temperature is below 32°F (0C°) allow the log splitter to warm up by extending and returning the wedge several times before splitting wood.

10. Always put the support leg in the down position to prevent the log splitter from moving during operation and block both tires.
11. Load a log onto the beam against the endplate (Max Log Length-24”).

Correct



Wrong



WARNING

ALWAYS hold the bark side of logs when loading or positioning, never the ends.

NEVER place your hands or any parts of your body between a log and the log splitter.

NEVER load or unload logs while the wedge is moving.

KEEP fingers away from cracks or partially split logs they can close quickly and pinch fingers.

NEVER straddle, reach across, or step over the beam while the engine is running.

ALWAYS cut ends square before attempting to split them. Logs that are not square can slide out while splitting and become a safety hazard or cause excessive force to log splitter components.

NEVER attempt to try and split more than one log at a time it can causing serious injury.

DO NOT split logs across the grain this will cause damage the log splitter and may cause pieces of the log to be thrown, injuring the operator or bystanders.

DO NOT attempt to re-split a stuck log once it has been removed from the wedge. Manually split with an axe or cut with a chainsaw.

12. Make sure hands are clear from the wedge and crush hazard areas.



CRUSH WARNING

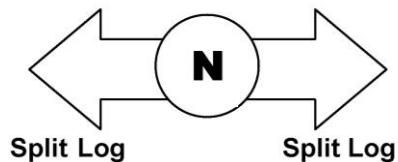
Wedge can cut through skin and break bones. Keep both hands away from wedge and beam slide. Serious accidents can happen when other people are allowed inside the work zone. Keep everyone else out of the work zone while operating control lever.

DO NOT wear loose clothing. It can get tangled in moving parts of log splitter. Only use the log splitter in daylight so you can see what you are doing.

13. Push the control levers **FORWARD** with both hands to extend the wedge to split the log.

14. Place another log on the opposite end plate and pull the control levers **BACKWARDS** with both hands to return the wedge to split the log.

SPLIT CONTROL



CAUTION

If a log gets stuck, embedded or will not split completely, push the control lever in the reverse direction and allow the splitter to strip the log from the wedge.

If the log still remains stuck, embedded or will not split, turn the machine off and use a sledge hammer and crow bar to remove the log.

ALWAYS keep hands clear of the log and wedge while it is retracting.

15. Always keep work area clean and free of split wood and debris.

16. After use turn engine off and remove engine debris. Debris left on a hot engine can be a fire hazard. Remove debris and chaff from engine cylinder head, cylinder head fins, blower housing rotating screen, and muffler areas.

Maintenance



WARNING

Improper maintenance of the log splitter may void your warranty. ALWAYS turn off the engine, disconnect the spark plug, and relieve system pressure before cleaning, adjusting, or repairing the splitter. Relieve system pressure by moving Split Control Lever back and forth several times.

MAINTENANCE

- Before performing maintenance, the log splitter must be placed in maintenance mode. Turn off the engine, disconnect spark plug and move the control lever forward and backwards to relieve the hydraulic pressure.
- After performing any maintenance, make sure all guards, shields and safety features are put back in place before operating the log splitter.
- Before operating make sure the tires have the RECOMMENDED TIRE PRESSURE.
- Regularly grease axle and wheel bearing area or when needed.
- Change hydraulic oil annually or every 100 hours.
- Periodically check all fasteners and hoses for tightness and leaks.
- Annually clean and lightly lubricate all moving parts or when needed.
- Use a glossy enamel spray paint to touch up scratched or worn painted metal surfaces.
- Never exceed load capacity rating of 20 tons it will damage the log splitter.

Refer to the Engine Owner's Manual for engine maintenance.

What	When	How
Hoses	Each Use	Inspect hoses for exposed wire mesh and leaks. Replace all worn or damaged hoses before starting the engine.
Hydraulic Fittings	Each Use	Inspect fittings for cracks and leaks. Replace all damaged fittings before starting the engine.
Nuts and Bolts	Each Use	Check for loose bolts, tighten before operating.
Beam	Each Use	Apply grease to beam surface.
Moving Parts	Each Use	Clear debris from log splitter.

Hydraulic Oil Change (Annually or 100hrs)

1. Remove the suction hose from the hydraulic tank to drain the hydraulic oil.
2. Drain hydraulic oil and fill with correct type of hydraulic oil approximately 2.5 Gallons (9.5L).
3. Replace the dipstick and check the oil level reads full (recheck oil level before operating).
4. Properly dispose of used oil at an oil-recycling center. Used hydraulic oil is hazardous waste.



WARNING

Dispose of the used oil and other toxic material properly. Take all used oil and waste to a designated waste facility or collection site for proper handling or recycling. **DO NOT dump the used oil or waste on the ground.**

IMPORTANT:

If a part needs replacement, only use parts that meet the manufacturer's specifications. Replacement parts that do not meet specifications may result in a safety hazard or poor operations.

Storage



WARNING

Improper storage of the log splitter may void your warranty.

STORAGE

- Retract the wedge completely (hitch end) to keep the rod protected from corrosion.
- Allow the machine to cool for at least five minutes before storing. **WARNING:** A hot engine can be a fire hazard.
- Before storing make sure the log splitter is clean and dry for years of trouble free service.
- Lightly lubricate all log splitter surfaces and moving parts to prevent rust.
- Store indoors or protected area during severe weather and winter months away from corrosive material, sources of heat, open flames, sparks or pilot lights.
- Refer to the engine manual for proper engine storage.

Short-Term Engine Storage:

- Consider adding a fuel stabilizer to extend fuel storage life.
- Turn the fuel valve lever to the OFF position.

Long-Term Engine Storage:

- Add a fuel stabilizer to extend fuel storage life.
- Turn the fuel valve lever to the OFF position.
- For longer periods of storage drain the fuel tank and carburetor as instructed in the engine owner's manual.



CAUTION

Gasoline will oxidize and deteriorate in storage. Old gasoline in the engine will cause hard starting and leave gum deposits that can clog the fuel system. Deterioration problems may occur within a few months or less.



WARNING

Always drain fuel from tank in outdoors in a well ventilated area.
Always stay away from sources of heat, flame, or sparks while handling fuel.
Clean up fuel spills/splashes immediately.

Troubleshooting



WARNING

Before troubleshooting or attempting to service, read the and follow all safety instructions to avoid serious injury to the operator or bystanders from moving parts that can crush or cut, burns, fire or explosion, or escaping high pressure hydraulic fluid.

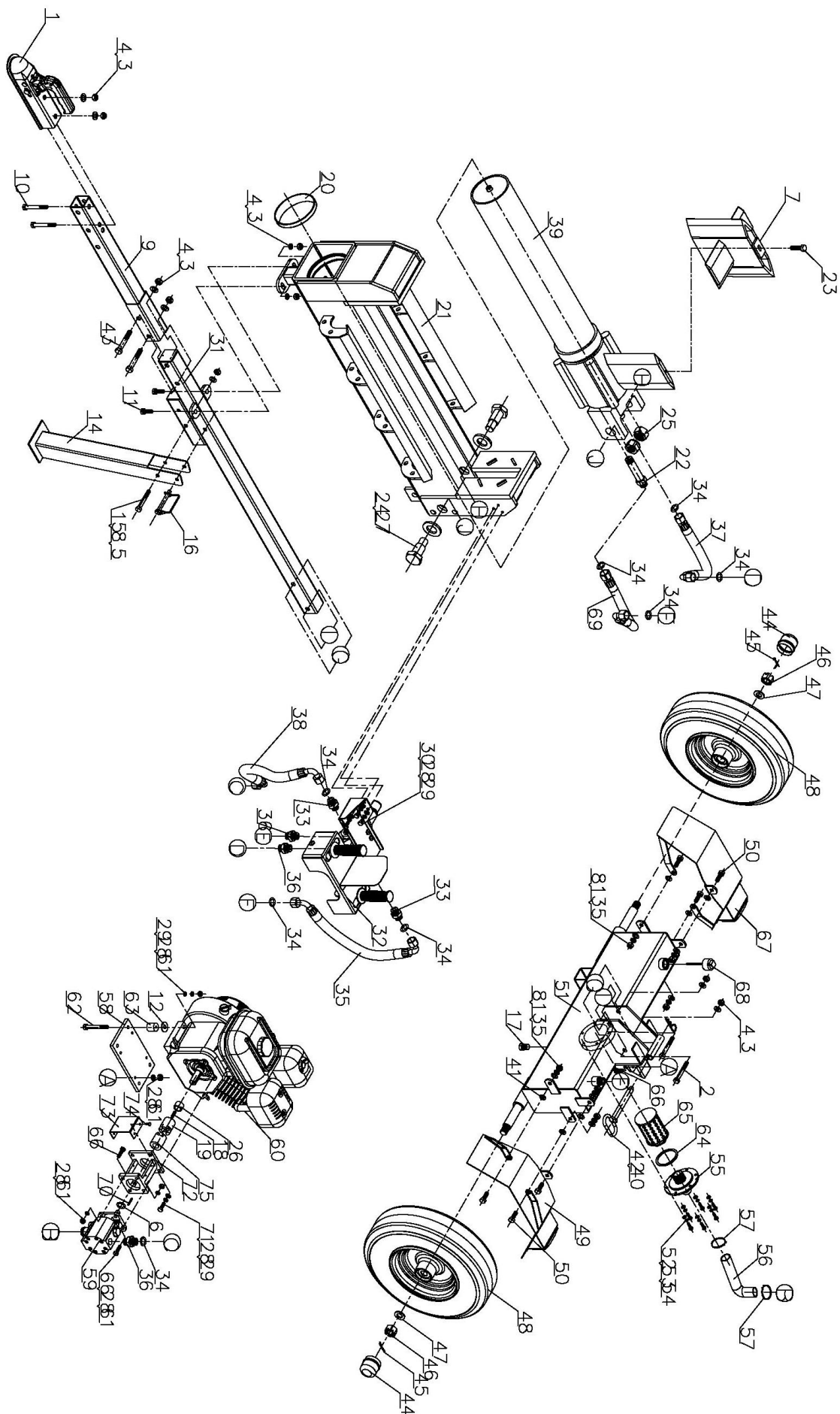
Problem	
Cylinder rod will not move	Solution: A, D, E, H, J
Slow cylinder shaft speed when extending or retracting	Solution: A, B, C, H, I, K, L
Wood will not split or splits extremely slowly	Solution: A, B, C, F, I, K
Engine bogs down during splitting	Solution: G
Engine stalls under low load condition	Solution: D, E
Cause	Solution
A- Insufficient oil to pump	Check oil level in reservoir
B- Air in oil	Check oil level in reservoir
C- Excessive pump inlet vacuum	Check pump inlet hose for blockage or kinks
D- Blocked hydraulic lines	Flush and clean the splitter hydraulic system
E- Blocked control valve	Flush and clean the splitter hydraulic system
F- Low control valve setting	Adjust control valve with a pressure gauge
G- High control valve setting	Adjust control valve with a pressure gauge
H- Damaged control valve	Return control valve for authorized repair
I- Internal control valve leak	Return control valve for authorized repair
J- Damaged cylinder piston	Return cylinder for authorized repair
K- Internally damaged cylinder	Return cylinder for authorized repair
L- Drawing air through suction line	Check and tighten hose clamps on suction hose

Specifications

Ram Force	Forward 20 Ton / Return 15 Ton
Cycle Time	Forward 8 s / Return 6 s
Wedge Size.....	7.5” Harden Steel
Hydraulic Cylinder (Bore & Stroke).....	4” x 22”
Gear Pump.....	2-Stage
Hydraulic Oil.....	10W AW32, ASLE H-150 or ISO32
Amount of Hydraulic Fluid	2.5 Gallon (9.5L)
Max. Pressure.....	3500 PSI
Max. Flow	11 GPM (39.2 L)
Max. Log Length	24”
Wheel Size.....	16” x 6.5”
Max. Towing Speed.....	45 MPH
Overall Dimensions (L x W x H)	213.8x107.1x97.4cm
Manual Start Engine.....	6.5Hp

NOTE: For Engine Details Refer to the Engine Owner’s Manual.

Parts Drawing & Parts List



Parts Drawing & Parts List

Part #	Drawing No.	Description	QTY
1	Z104	50mm Coupler	1
2	9101-12080-DX8.8	Hex Bolt M12x80	2
3	9301-12000-DX	Flat Washer Ø12	8
4	9206-12000-DX	Nylon Lock Nut M12	8
5	9206-10000-DX	Nylon Lock Nut M10	7
6	N29W-00012	Wire Snap rings for shaft	1
7	CAX182-10000	Cross Wedge Sleeve Slide	1
8	9301-10000-DX	Flat Washer Ø10	7
9	DS25-05000	Front Tow Bar	1
10	9101-12070-DX8.8	Hex Bolt M12x70	2
11	9101-12035-DX8.8	Hex Bolt M12x35	2
12	9302-10000-DX	Big Flat Washer Ø10	4
13	9306-10000-DX	Lock Washer Ø10	6
14	DS25-06000	Support Leg	1
15	9101-10075-DX8.8	Hex Bolt M10x75	1
16	NL17-06000-DX	Lock Pin	1
17	N290-00008-DX	Oil Plug	1
18	N290-17007	Flat Key	1
19	N290-17003-FH	Flange	1
20	DS20-00001	Cylinder Guide Bushing	1
21	DS20-02000	Beam Assembly	1
22	DS25-00009	Lengthening Connector NPT1/2"-7/8"	1
23	9101-08040-DX8.8	Hex Bolt M8x40	1
24	DS25-00002-DX	Connection Pin	2
25	9206-24000-DX	Hex Nylon Lock Nut M24	2
26	N290-17002-DX	Engine Bushing	1
27	9301-30000-DX	Flat Washer Ø30	2
28	9306-08000-DX	Lock Washer Ø8	19
29	9301-08000-DX	Flat Washer Ø8	11
30	9101-08016-DX8.8	Hex Bolt M8x16	3

Part #	Drawing No.	Description	QTY
31	DS25-04000	Tow Bar	1
32	M4V23B	Control Valve	1
33	DS25-00008	Connector NPT3/4"-7/8"	2
34	9901-11.2*2.4	O Ring Ø11.2x2.4	8
35	DS25E-00002	Hydraulic Hose (Valve-Oil Tank)	1
36	N29W-00006-DX	Connector NPT1/2"-7/8"	3
37	DS25-00005	Hydraulic Hose (Valve-Cylinder End Cap)	1
38	DS25E-00001	Hydraulic Hose (Valve-Gear Pump)	1
39	DS20-01000	Cylinder	1
40	N021-00004	R Pin Ø4	1
41	N29W-00009	Rubber Washer	6
42	DS20-03000	Tapered Roller Bearing	1
43	9101-12075-DX8.8	Hex Nut M12x75	2
44	NS22-00011-DX	Axle Cap	2
45	9404-4x36-DX	Cotter Pin 4x36	2
46	NS22-00012-FH	Slotted Nut M12	2
47	9301-20000-DX	Flat Washer Ø20	2
48	NS22-08000	Wheel	2
49	N290-15000	Left Fender	1
50	9101-10030-DX8.8	Hex Bolt M10x30	6
51	DS25-03000	Oil Tank	1
52	9101-06020-DX8.8	Hex Bolt M6x20	6
53	9306-06000-DX	Lock Washer Ø6	6
54	9301-06000-DX	Flat Washer Ø6	6
55	N290-04000-DX	Filter Fix Plate	1
56	DS25-00007	Oil Pipe	1
57	N290-00019	Clamp	2
58	N29N-00001	Engine Mounting Plate A	1
59	N29W-07000	Gear Pump	1
60	YQ-RT6.5A-HE	Engine	1

Part #	Drawing No.	Description	QTY
61	9206-08000-DX	Nylon Hex Nut M8	12
62	9101-08075-DX8.8	Hex Bolt M8x75	4
63	N294-00005	Polyurethane Block	4
64	N290-00022	Rubber Washer	1
65	N290-00018	Filter	1
66	9101-08030-DX8.8	Hex Bolt M8x30	8
67	N290-16000	Right Fender	1
68	LSP25-13000	Oil Bolt	1
69	DS25-00006	Hydraulic Hose(Valve-Cylinder End Cap)	1
70	N012-06002	Flat Key	1
71	YZ01-08025-DX8.8	Hex Bolt	4
72	N290-17005	Gear Pump Stand	1
73	N290-17006	Connector Cover	1
74	9101-05010-DX	Hex Bolt M5x10	4
75	N290-17004-FH	Gear Pump Connector	1

Konformitätserklärung
gemäß Maschinenrichtlinie 2006/42/EG, Anhang II A
EC-Declaration of Conformity according to machine directive 2006/42/EC, Annex II A

Hiermit erklären wir / We herewith declare

Jansen GmbH & Co. KG
Ostersand 19
49824 Emlichheim

Dass die nachfolgend bezeichnete Maschine(n) aufgrund Ihrer Bauart mit den grundlegenden Sicherheits- und Gesundheitsanforderungen der einschlägigen EG-Richtlinien übereinstimmen.

That the following machine(s), based on its construction, comply with the basic safety and health requirements of the appropriate EC-directives.

Maschinenbeschreibung & Typ:
Description of machine:

Holzspalter / log splitter: SP23316

Verkaufsbezeichnung / sales designation: HS-20DS63

die Konformität mit folgenden EG-Richtlinien / conformity tot he following EC directive:

- 2006/42/EG EG-Maschinenrichtlinie

Angewandte harmonisierte Normen / Applicable EC directives:

- EN ISO 12100-1:2003; Sicherheit von Maschinen — Grundbegriffe, allgemeine Gestaltungsleitsätze — Teil 1: Grundsätzliche Terminologie, Methodologie
- EN ISO 12100-2:2003; Sicherheit von Maschinen — Grundbegriffe, allgemeine Gestaltungsleitsätze — Teil 2: Technische Leitsätze

Person, die bevollmächtigt ist, die technischen Unterlagen zusammenzustellen:
Name, title, date and signature of responsible person:

G. Kuipers, Fa. Jansen GmbH & Co. KG

Emlichheim, 05.07.2019



G. Kuipers, Geschäftsführer

